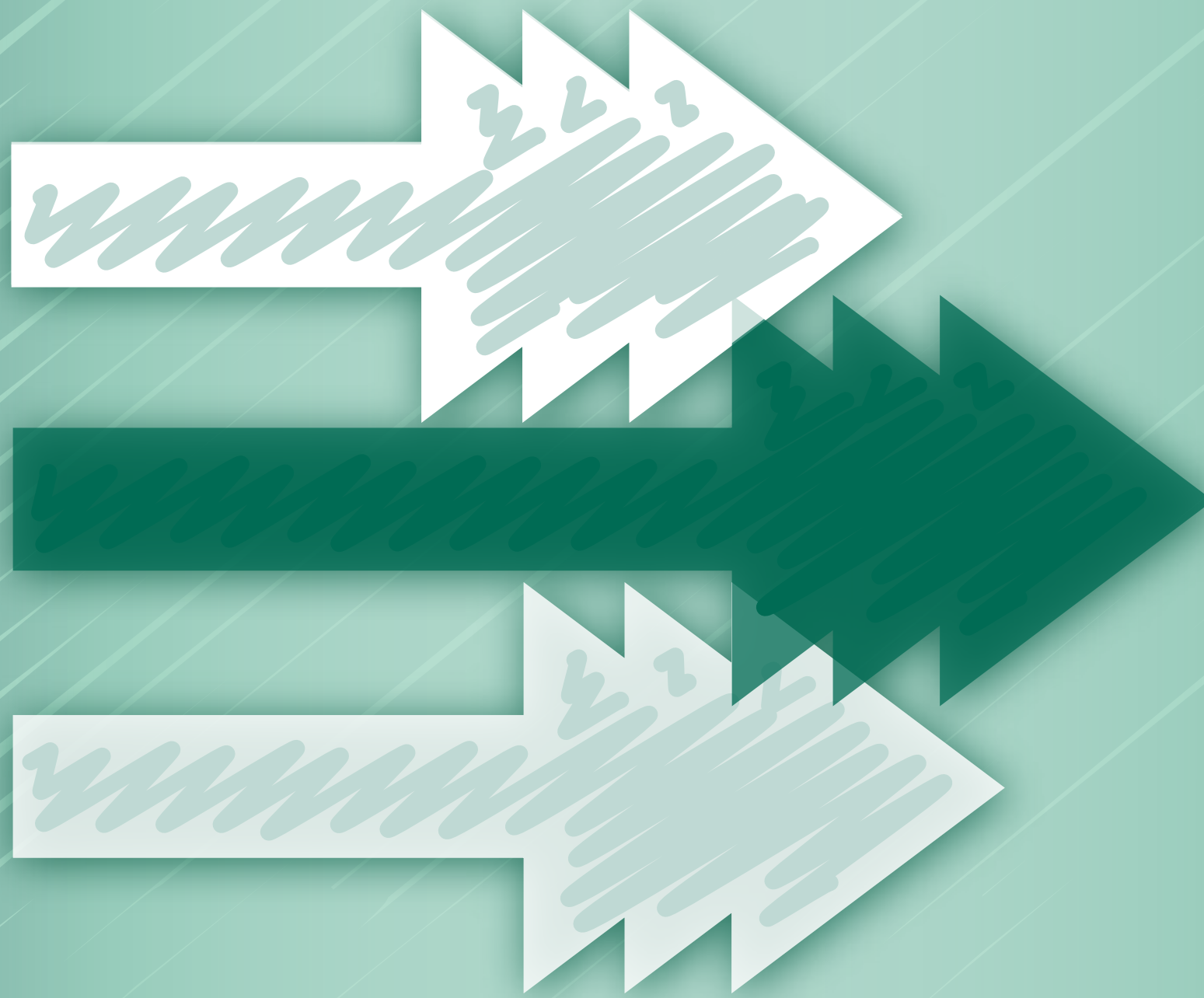


SCISWA IS YOUR RESOURCE



RESOURCE

MISSION STATEMENT

To provide economically and environmentally sound management of waste materials by supporting proper resource management practices throughout the Agency planning area.



RESOURCE

We will treat all discarded materials as potential resources.



EDUCATION

We will educate the business community and public on the importance of environmental stewardship by acting as a resource to members.



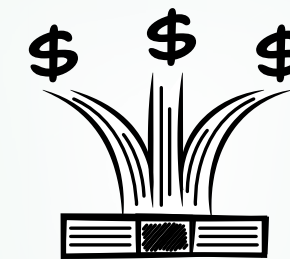
SAFETY

We will promote the safety of all staff and visitors using emergency and operational policies, procedures, and training programs.



OPERATION

We will operate Agency facilities and equipment in a manner that minimizes damage to the environment by setting annual objectives and targets to address environmental performance.



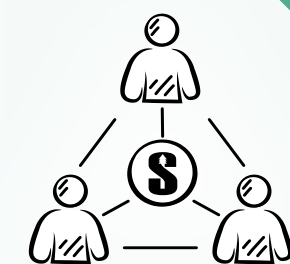
UTILIZATION

We will utilize Agency assets to maintain the financial viability of services through diversification of revenue sources and cost-efficient operational methods.



RESPONSIBILITY

We will address responsibility for environmental liability and regulatory compliance through sound decisions about site, facility, and program development, operations, and post-operation care to preserve the natural resources of the area.



COORDINATION

We will coordinate operations and services with our members and employees, anticipating and responding to concerns about potential and actual impacts of the Agency's activities.



EVALUATION

We will evaluate performance of the Agency in meeting its Mission Statement and established environmental objectives and targets annually.

ENVIRONMENTAL POLICY

South Central Iowa Solid Waste Agency employees are expected to understand, promote, and assist in the implementation of this policy.

